

Manual Config tool PreAmplifier

Contents

Preface	1
Getting started	2
Update:.....	4
Start update.....	4
Update progress	4
Update completion	5
Failed updates	6
Forcing bootloader mode	7
OEM configuration tool	8
Bluetooth name	8
Custom source names	9
Extra OEM options	9
Custom logo	9
Clone read	9
Clone write	10
Figurelist	11
Revisions	11

Preface

The DIY-PreAmplifier and OEM-PreAmplifier are equipped with an OLED display which can display various settings. Most of these settings are done using the menu which is activated by pressing the left front knob. With this knob it is possible to iterate through all settings.

To update the firmware of all modules within the PREAMP, a configuration tool is developed. With this tool it is also possible to change some settings that are not accessible through the menu (see Figure 3) and you can view a compact log and check the serial number.

Getting started

1. Install the config tool on PC. The PREAMP config tool can be downloaded from here: www.hypexdirect.nl. It is a Windows only application depending on .NET framework 4.8 or higher.
2. Connect USB mini cable between computer and the USB service port on the back of the PREAMP.
3. Start the Config Tool.
4. Start up the PREAMP (push volume button) and it will connect to the config tool. If an update is available, a pop-up message will appear to notify that a new update bundle is available. This update is downloaded automatically:

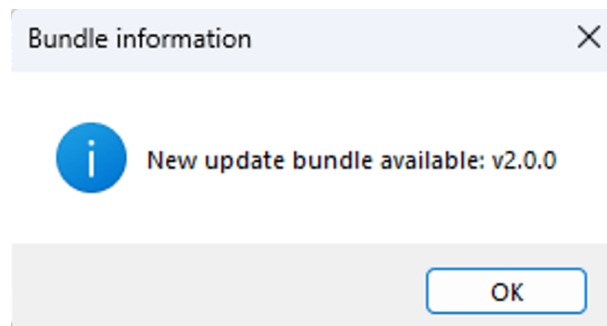


Figure 1: Update bundle available

Depending on the version of the firmware of the connected PREAMP, one of the following two screens will be visible:

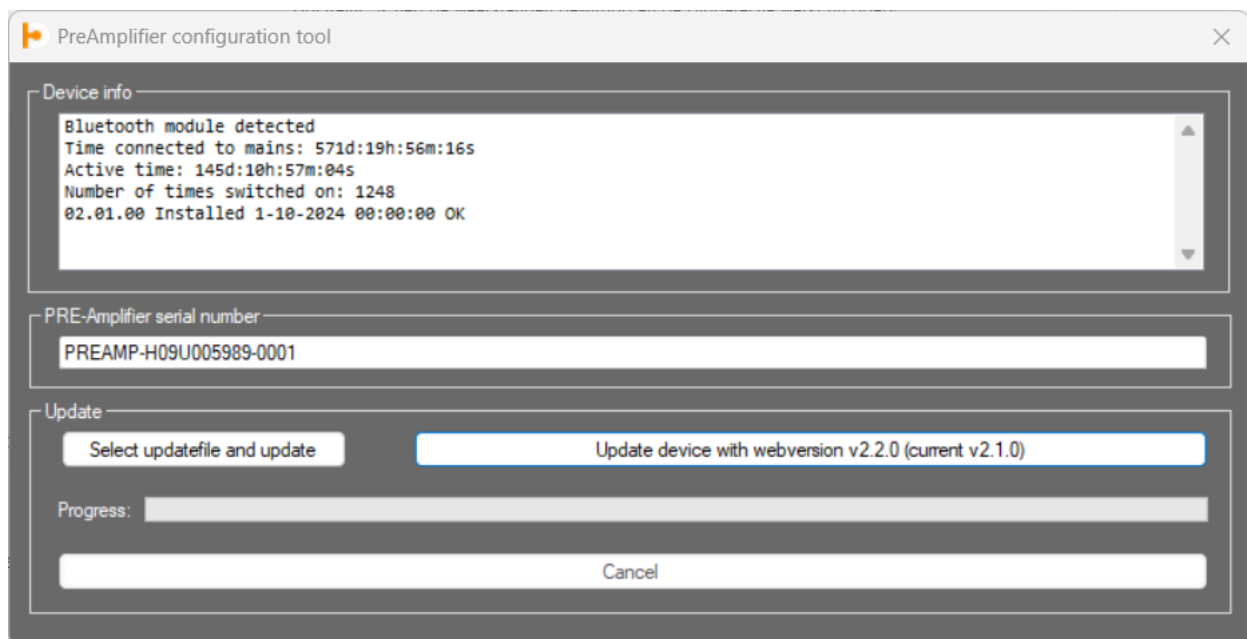


Figure 2: Configtool main page (before v2.2.0 firmware)

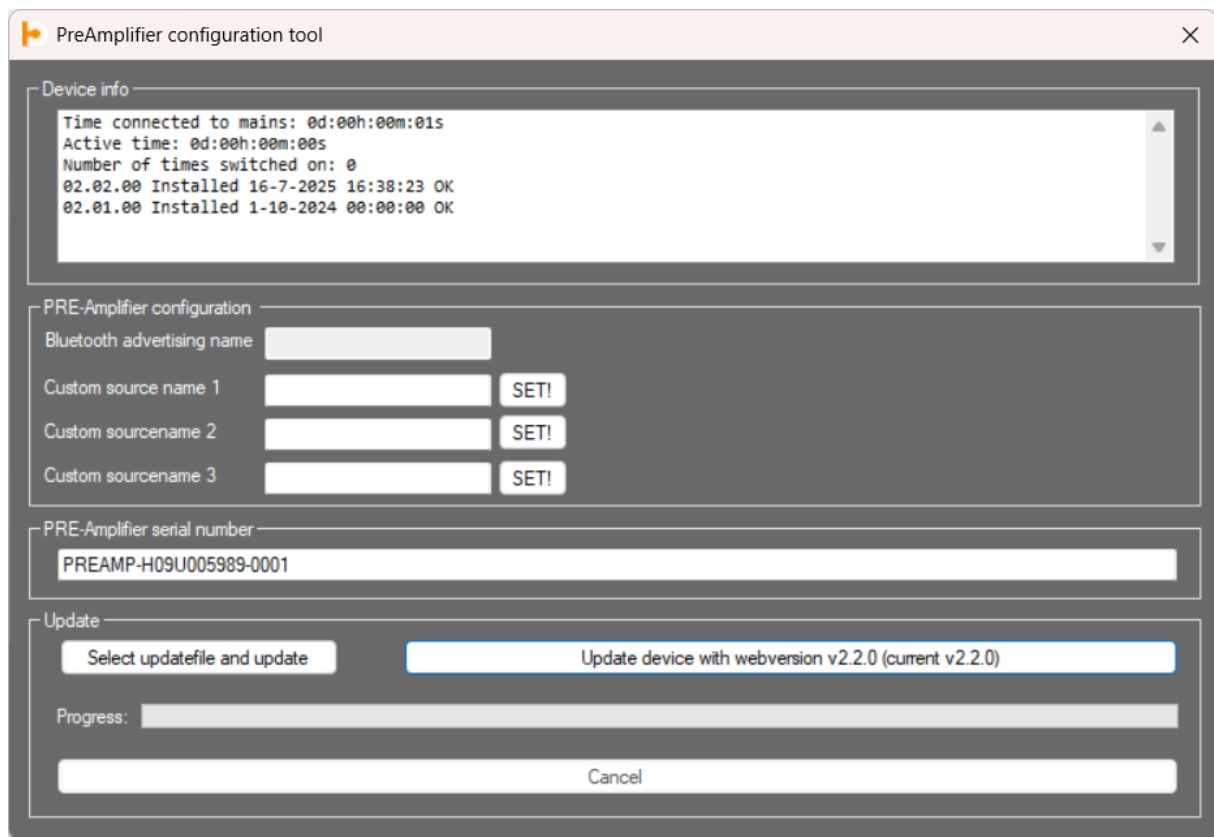


Figure 3: Config tool main page (v2.2.0 and higher firmware)

5. To update your device you need to click on the button **Update device with webversion vx.x.x (current vx.x.x)**. Then, the update will start and will process only modules that need to be updated.
6. As of firmware version 2.2.0 a few more parameters are visible. These are:
 - a. Bluetooth advertising name
 - b. Custom source name 1
 - c. Custom source name 2
 - d. Custom source name 3

Only b), c) and d) can be changed, a) is read-only. The custom source names can be assigned to an input (this is done on the PRE-AMP itself) and will be displayed on the OLED display when that input is selected.

The Bluetooth advertising name is only visible for your convenience.

Update:

Start update

When an update is available, or it is needed to update the device, two buttons are available:



Normally the right button is used. If you click on it, the most recent firmware will be downloaded from the Hypex website and programmed into the device. After clicking the left button, you will have to select an update file bundle, usually received by our support service, or in case of a downgrade, found on a location on your harddrive, which should be here:

"C:\Users\[your Windows user name]\AppData\Roaming\DIYPREAMP". In subfolder "BAK" you will find the previous update in a file named "DiyPreAmp.zip",

Do not power down or remove the power cable during update. Do not remove the USB mini cable during update.

The update order is:

- Main
- Front
- Digin (if placed in device)

Update progress

The Config tool will show which update is in progress (see figure below).

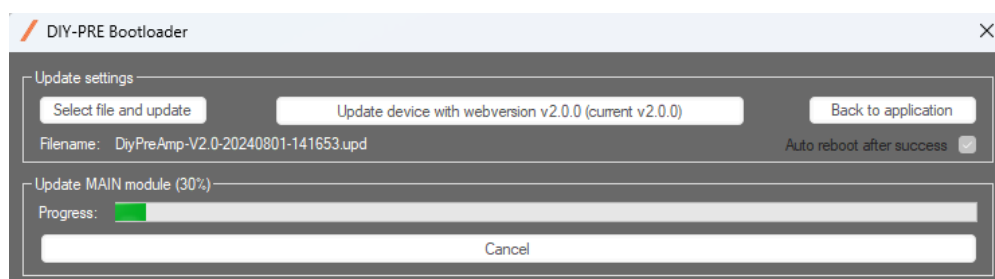


Figure 4: Update of main module in progress

The display on the device will also show which part of the update is in process.



For example:

After the main module, the Front module will be updated if needed. The screen will change into the standard configuration screen:

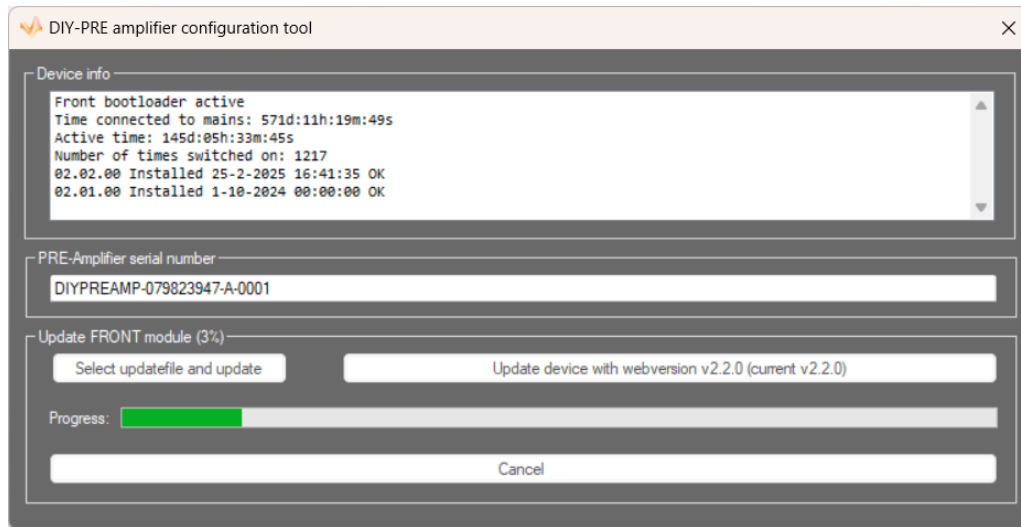


Figure 5: Front update in progress

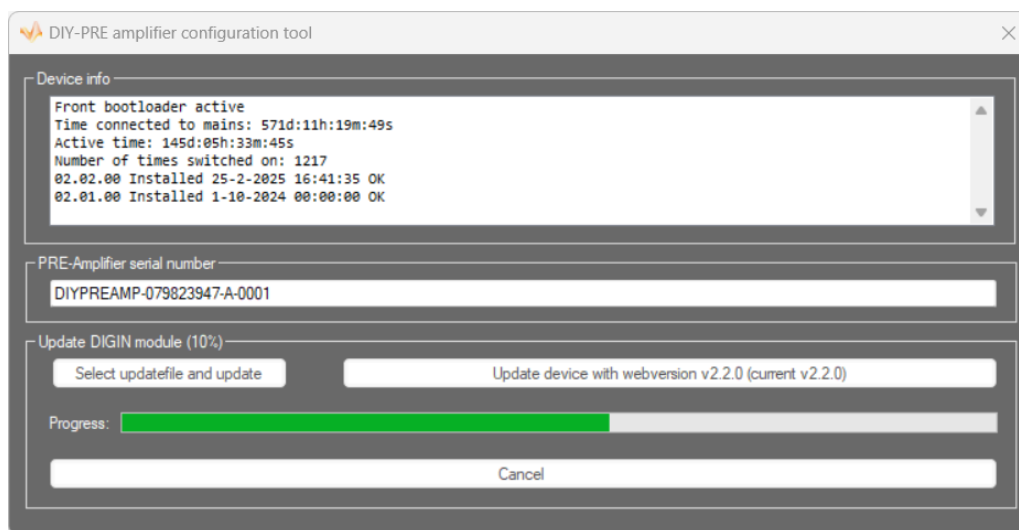


Figure 6: Digin update in progress

Update completion

After the update is completed, a pop-up message will appear, that could look like this:

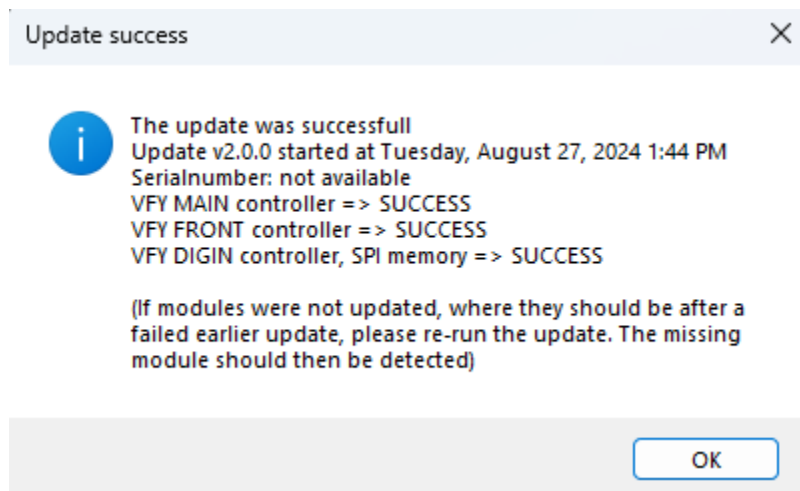


Figure 7: Update successful

Please follow the instructions to reboot the device (power cycle):

- switch the device off with the power switch on the back
- wait 15 seconds
- switch device on
- wait 5 seconds
- press volume button to power on device

Failed updates

If the update has failed, then a pop-up message will appear that will notify you which part failed. Please follow the instructions to update the device again.

- a) If the update has failed during the update of the main module, then the device will recognize that the device is in an interrupted update state. Click on update to start update procedure. After successful updating the Main module, the update procedure can be started again to update the rest of the device (which will most probably update the main module if it is in the update bundle).

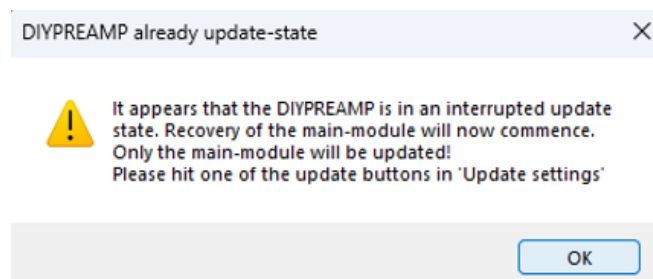


Figure 8: Device in an interrupted update state

- b) If the update failed during the update of another module, then the update needs to be started again. It is possible that the config tool does not detect that

the update has failed. Click on **Update device with webversion vx.x.x (current vx.x.x)** button. If a pop-up message appears that the update is not necessary, then click Yes.

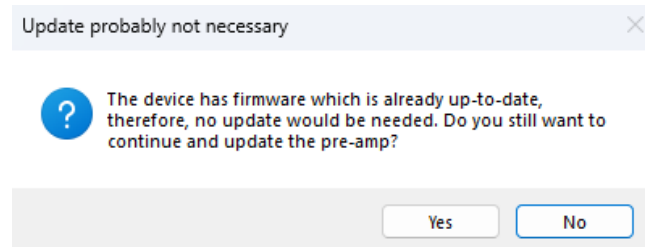
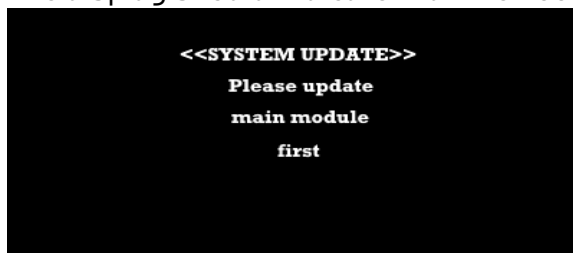


Figure 9: Update probably not necessary

Forcing bootloader mode

It is possible to force the internal modules to run their bootloaders in the unlikely event that the microcontrollers will not go into bootloader mode during the normal update process.

1. Make sure that the power switch at the back is switched to off and wait at least 30 seconds
2. Next, press the volume knob (right knob) and the headphones enable button at the same time
3. And switch the power switch at the back to on
4. Release the headphone enable button and the volume knob
5. The display should indicate that the bootloaders are started:



The update can then be started by starting the Config Tool and then click on the button **Update device with webversion vx.x.x (current vx.x.x)**. That will start updating the main module first and if needed the rest of the modules.

OEM configuration tool

The OEM configuration tool has a slightly different look, compared to the DIY config tool, because there are a few more parameters that can be modified. The tool needs a special unlock code, provided by Hypex to start the tool in OEM mode. Please contact Hypex if you need the code.

When the tool is started with the OEM unlock code, the start-screen will look like this (when an OEM device is connected):

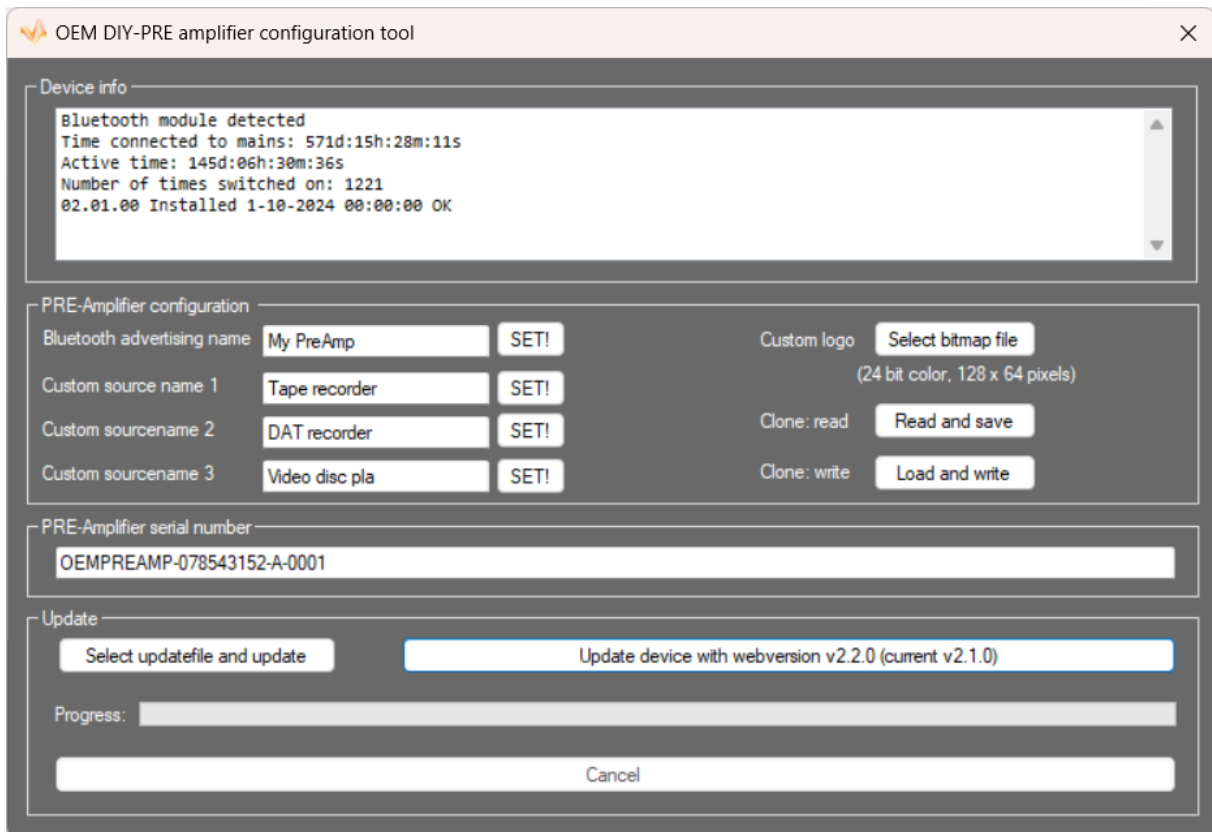


Figure 10: OEM-PREAMP connected

When an OEM-PREAMP is connected to the config tool, it will display a few more options than when a DIY-PREAMP is connected. All options that came with version 2.2.0 are found in the box "PRE-Amplifier configuration" (see Figure 10: OEM-PREAMP connected).

Bluetooth name

Notice that "Bluetooth advertising name" now is also writable. Just change the name and hit **SET!**. The name will be changed instantly and the text **Success!** will appear at the right of the SET! button. If the name could not be changed, instead of "Success!", it will prompt "Failed!". When failed, please try again and hit the SET button again.

Custom source names

It is possible for the user to change three source names, which can be appointed to a source. That way, on the display of the PREAMP a meaningful name for that source can be displayed, when it is selected. For example: "Tape recorder" or "Phono 1". The names can be entered just like the Bluetooth name as described above.

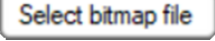
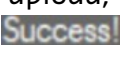
Extra OEM options

Three more options are available on the right column in the "PRE-Amplifier configuration" box:

- 1) Custom logo
- 2) Clone read
- 3) Clone write

Custom logo

The OEM-PREAMP has the ability to store a custom logo which is shown right after power-up and after a menu timeout time (just before the display is erased to spare the OLED). To change this, you need to create a bitmap of size 128 x 64 pixels with a 24 bit-depth, containing only two colors: black and white. On Windows computers, these are probably the default file properties when saving a ".bmp" file.


Create your own bitmap and hit . This will open a file-browser window. Please find your saved bitmap file and open it. It will then be uploaded to the PREAMP and will replace the current logo. During the upload, you will see a progress bar. When the upload completed successfully, the text  will appear next to the "Select bitmap file". To check if the logo is correctly displayed, please power-cycle the PREAMP and watch the display when you press the volume button to switch the device ON. If the logo is not what you expected, please verify that the bitmap contains only black and white pixels with a 24 bit depth and try again.

Clone read


Important: Make sure that the PREAMP is updated to at least firmware version 2.2.0

To make multiple copies of the OEM-PREAMP which are exactly the same (except the serial number and firmware), it is possible to read a device and store its settings in a file. Items that are included in the clone-data are:

- Bluetooth advertising name
- Custom source names 1,2 and 3
- All presets (including selected source and volume)
- Custom logo

To make a copy of a OEM-PREAMP, hit the  button, select an output file in a location where you can find it later and give it a relevant name.

Clone write

When you want to program the settings you just read into a new OEM-PREAMP, or other OEM-PREAMP, just connect that PREAMP to the config tool, and start the cloning procedure by hitting the  button. It will open a dialog where you can select a clone-file with the saved settings. After confirming the selection, it will be programmed into the connected PREAMP. After the cloning it is advisable to powercycle the PREAMP to load all of the new settings. Please follow the same instructions as described to hard-reboot the device:

- switch the device off with the power switch on the back
- wait 15 seconds
- switch device on
- wait 5 seconds
- press volume button to power on device

Figurelist

Figure 1: Update bundle available	2
Figure 2: Configtool main page (before v2.2.0 firmare).....	2
Figure 3: Config tool main page (v2.2.0 and higher firmware)	3
Figure 4: Update of main module in progress	4
Figure 5: Front update in progress	5
Figure 6: Digin update in progress.....	5
Figure 7: Update successful.....	6
Figure 8: Device in an interrupted update state	6
Figure 9: Update probably not necessary	7
Figure 10: OEM-PREAMP connected.....	8

Revisions

Document revision	Change log	Date
R1	First release	November '24
R2	Layout and content updated	March '25
R3	Website HypexDirect	July '25